

QUICK MANUAL REMOTE MODE CONFIGURATION



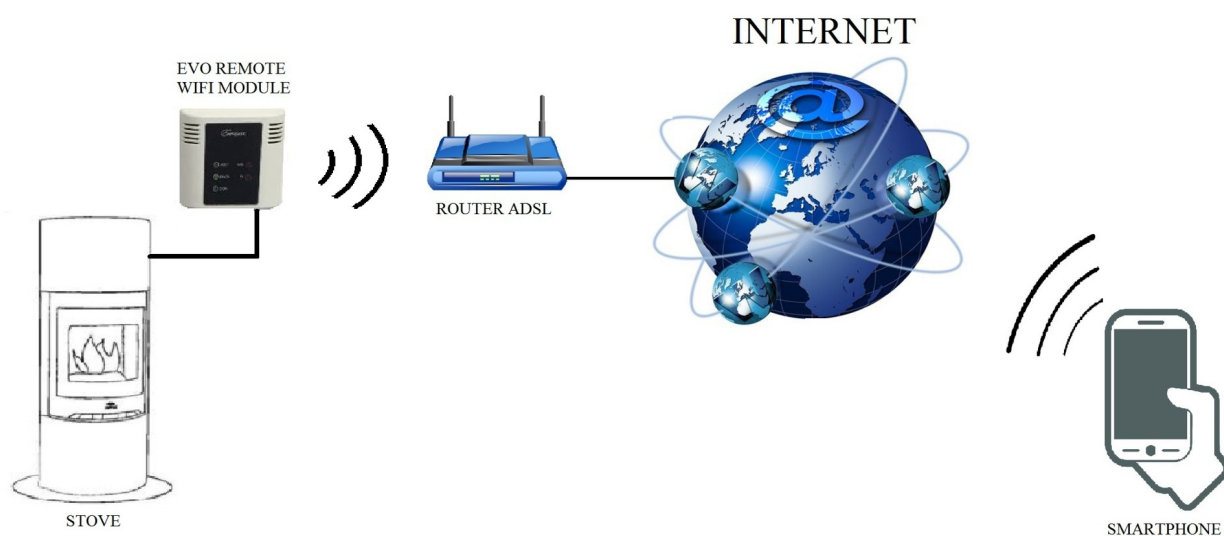
EVO Remote M1

MAN_00010_EN(M1)
ED: 1.10 -October 2025

1 Index

1 Index.....	2
2 Operation example.....	3
3 Necessary materials and informations.....	4
4 Warnings.....	4
5 Conditions of Use.....	4
6 Registration.....	5
7 M1 WiFi module configurations With MyDPRemote App.....	7
.....	7
8 M1 WiFi module configurations.....	8
Configuration Procedure.....	8
9 LED Status.....	11
10 MyDPRemote app configuration with QR Code.....	12
11 DPRemote and My DPRemote configuration without QR code.....	13
12 Change Set Temperature App.....	16
13 Connecting Alexa App.....	17
IoT server registration.....	18
Configure the Alexa App.....	21
14 Samsung SmartThings App Connection.....	24
15 Google Home App Connection.....	25
16 Troubleshooting.....	26
17 Connection Troubleshooting.....	28
18 Technical features.....	29
19 Declaration of Conformity.....	29
20 Information on product disposal.....	29

2 Operation example



In the remote mode, the M1 WiFi module is connected with a cable to the stove, and with a wireless connection is connected to a router. The router allows the WiFi module to connect itself to internet.

A smartphone, connected to internet with a mobile connection or a WiFi private network, can communicate with the M1 WiFi module, and so can control your stove wherever you are. The data communication between the wifi module and the app is encrypted and does not contain any sensitive information.

3 Necessary materials and informations

To configure the M1 WiFi module in the remote mode, you must have:

- A M1 WiFi module with its **Device Code** available on the back of the module
- A device with WiFi connectivity (Smartphone, PC, tablet)

Moreover, you have to know the following informations:

- Name of the WiFi network (SSID)
- Password of the WiFi network

This informations usually are available on the box of the router itself, or the person who set up your private network gave you them.

4 Warnings

- ◆ The M1 WiFi module **DOESN'T** support the network with spaces in the SSID **AND/OR** spaces in the password. In this case, the module will be no longer useful in remote mode. Change the name and/or the password of the WiFi network.
- ◆ The WiFi Module works with 2,4 Ghz networks. It doesn't support 5 Ghz networks.
- ◆ The M1 WiFi module supports only the network with the following security:
 - WEP
 - WPA-PSK
 - WPA2-PSK

5 Conditions of Use

Installing and using the M1 wifi module and the DPREMOTE Application, you accept the terms of use and the limitations of liability that you find at the link:

<https://www.duepigroup.com/condizioni-di-utilizzo-mydpremote/>



6 Registration

To use the EVO Remote WiFi module in the remote mode, is necessary a **free** registration, in order to receive the parameters needed for the smartphone app.

To register yourself, go to the following web page with a PC or a smartphone:

<https://www.duepigroup.com/prodotti-duepi/mydpreremote-app-iphone-android/>

In this page you can access the device's registration:

REGISTRA IL TUO DISPOSITIVO	REGISTER HERE YOUR MYDPREMOTE
 	<p>Registra qui il tuo dispositivo mydpreremote</p> <p>Il wifi è già attivo, tutti i dati di configurazione sono in tuo possesso e presenti nelle guide rapide. Nessuna risposta seguirà la Vs. registrazione !</p> <p>Nome (*)</p> <p>Cognome (*)</p> <p>Indirizzo Email (*)</p> <p>Indirizzo (*)</p> <p>Città e provincia (*)</p> <p>Codice Dispositivo Presente sul WiFi Box (*)</p> <p>Sistema Operativo del vostro dispositivo. È sufficiente una sola registrazione per poter usare l'App sia con Android che Apple IOs.</p> <p>Consenso condizioni di utilizzo* Consenso limitazioni di responsabilità* Consenso Informato. Ai Accetto <input type="checkbox"/></p> <p>Dichiaro di aver preso visione e di accettare con esplicito consenso i tutte le sue parti il documento di condizioni di utilizzo dell'applicazione "mydpreremote"</p> <p>Accetto <input type="checkbox"/></p> <p>Dichiaro di aver preso visione e di accettare con esplicito consenso i tutte le sue parti il documento descrittivo delle limitazioni di responsabilità nell'uso dell'applicazione "mydpreremote"</p> <p>sensi del D.Lgs. 196/2003 e successive modifiche*</p> <p>Accetto <input type="checkbox"/></p> <p>Dichiaro di avere preso visione dell'informativa e dell'art.13 e di Acconsentire con esplicito consenso al trattamento dei miei dati personali, nei limiti e per le finalità indicati nella menzionata informativa (Privacy Policy).</p> <p>Registra</p>
<p>Lontano da Casa?</p> <p>Sei partito ed hai dimenticato di chiudere la stufa? O stai pianificando un magnifico weekend nella tua casa in montagna ma temi che al tuo arrivo l'ambiente sia troppo freddo?</p>	
<p>"mydpreremote" ti assiste</p> <p>Con la nuova App per smartphone "mydpreremote" potete gestire il calore della vostra casa secondo le vostre esigenze preferite.</p>	
<p>Soluzione a Distanza</p> <p>Duepi Group ti offre la soluzione ai tuoi problemi, ovunque ti trovi e in qualsiasi momento del giorno.</p>	

ATTENTION!

After send registration don't receive any email from us. Your device already work.
see Par.10 And read how configure App.

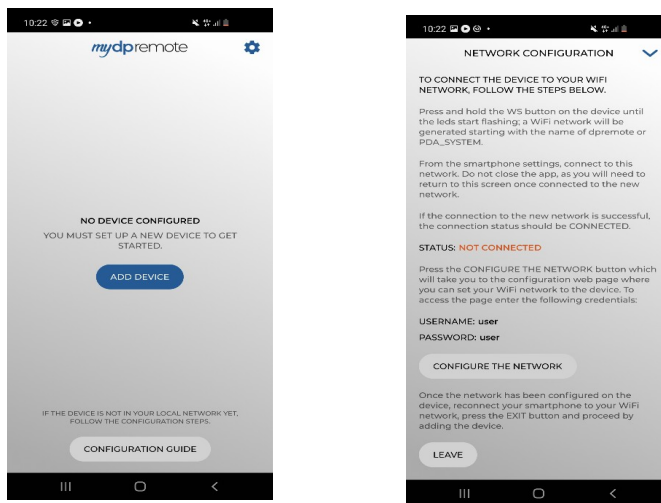
You can made only one registration to use App in more than one device Ios and Android. Don't send more than one registration !

For further informations, you can contact us at the mail dpremote@duepigroup.com.

Anyway you can contact manufacturer of stove in order to have full support.

7 M1 WiFi module configurations With MyDPRemote App.

ATTENTION ! The following operations must be performed near the WiFi module (no more than 3-4 meters away), so make sure you have access to the module itself. Once you have downloaded the MyDPRemote App, or equivalent customization, from Google Play for Android or App Store for Ios Open it and accept the terms of use: the following screen will appear. Select “CONFIGURATION GUIDE” and follow the instructions on the next page. It is important to connect to the wifi network generated through the wifi network setting of the smartphone and stay connected even if the same warns you that the network to which you are connected does not have an Internet connection. This network is for wifi module configuration only.



Once the connection STATUS is “Connected” and green colored, select “CONFIGURATION NETWORK” and follow the indications in Chapter 8 par..

8 M1 WiFi module configurations

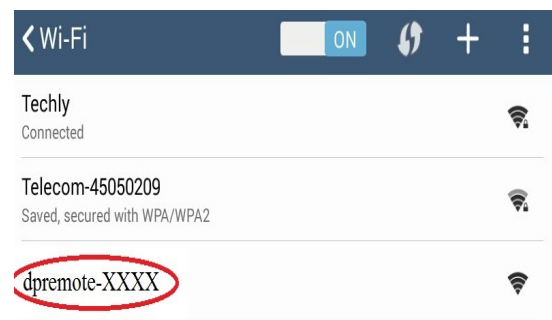
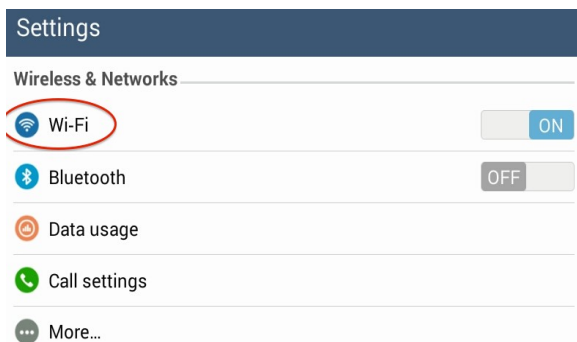
ATTENTION! The following operations must be done near the WiFi module (not more than 3-4 meters).

The connection status is indicated by the activation of the LEDs on the WiFi module:

- flashing LEDs red and green: the WiFi module is not connected to home network.
- Green LED on: the module is configured and connected to the server.

Configuration Procedure

1. Connect the M1 WiFi module to the stove not powered. Then power the stove and after a few seconds press the “R” button. The device will restart again. If the M1 device is not configured, the green and red LEDs will blink randomly.
2. Open the WiFi settings on your smartphone. Search the network PDA-SYSTEM_XXXX. If the PDA-SYSTEM network doesn't appear in about 30 seconds, press the “WS” button for 1-2 seconds until the LEDs are flashing alternately red-green. At this point, search for the network dpreMOTE_XXXX and connect.



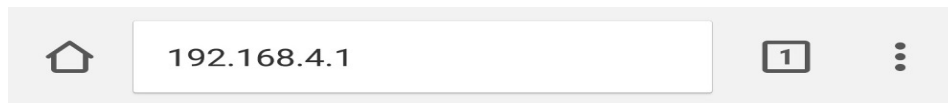
3. Once you are connected, open an internet program (Explorer, Firefox, Chrome, Safari, ...);



Accept, if requested by the smartphone, to connect to this open network without internet. This is a network configuration only of the WiFi module.



4. Insert in the address bar the following text: **192.168.4.1**



5. The module will ask for the log in:

Authentication Required

http://192.168.4.1 requires a username and password. Your connection to this site is not private.

User Name:

Password:

[CANCEL](#) [LOG IN](#)

Insert:

- Username: **user**
- Password: **user**

Press the **LOG IN** button.

6. When charged, you will see a page similar to the following. You can also see the firmware version installed on the module:

A screenshot of a web interface for 'DUEPI group srl'. At the top is the company logo. Below it, the URL 'http://www.duepigroup.com' and the version 'Ver. 1.17' are displayed. The main heading is 'Available Access Point', followed by a 'Scan Networks' button. A table lists scanned networks with columns for SSID, RSSI, and Security. The 'DUEPI' network is selected. Below the table is a 'Your configuration' section with input fields for SSID (DUEPI), Password, and Security (MIXED), along with a 'Save & Exit' button. At the bottom is a 'Factory Reset' button.

SSID	RSSI	Security
<input type="radio"/> Techly	-40 dBm	WPA2
<input checked="" type="radio"/> DUEPI	-37 dBm	MIXED
<input type="radio"/> Telecom-Reapeter	-59 dBm	WPA2
<input type="radio"/> Telecom-45050209	-79 dBm	WPA2
<input type="radio"/> WINET_7FD20794	-58 dBm	MIXED
<input type="radio"/> TP-LINK_DUEPI	-32 dBm	MIXED


Your configuration

SSID:

Password:

Security:

7. In the field **Available Access Point**, if your network isn't displayed, press the **Scan Networks** button;
8. In case the page don't open press **Scan Networks** again or clean cache memory of used device to configure wifi box. To do so, follow instruction of web browser user.

	<p>RSSI value indicates the signal level of the WiFi network received from the module. In case the value is lower than -65dBm (for example -75dBm), the communication between the module and the dpremove application is not optimal. It is therefore necessary to bring the WiFi module closer to the router, or add a WiFi repeater.</p>
---	--

Select the desired network by pressing in the button near the network name (SSID). If there isn't your network, you can put its name manually in the below field **SSID**;

9. Cancel the existing password field and enter the password of the WiFi network you are connecting to.

ATTENTION! Always check that you have not entered any space before and after the password.

10. Press the **Save & Exit** button

192.168.4.1 says:
Press OK to confirm!
Cancel to return to the page!

CANCEL OK

11. Confirm the configuration pressing **OK** button
12. At this point you can close the web page. If the module doesn't reboot itself, press the “**R**” button for some seconds.
13. Open the WiFi settings on your smartphone, cancel the memorized networks PDA_SYSTEM_xxxx or dpremove_xxxx, if present, so you don't connect to them unintentionally while using your phone.

Once rebooted, in few minutes the module will connect to your chosen WiFi network. This situation is visible from the green LED, that stay on solid. In the case this doesn't happen, try to repeat the module configuration, and control carefully the inserted data, or see the **Par. 16** for troubleshooting. The table below shows in details the module functionality in function of the LED status.

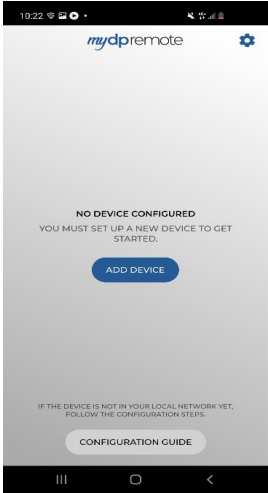

9 LED Status


Green LED	Yellow LED	Red LED	Situation	What to do
OFF	OFF	OFF	The module isn't powered	Check the connection between module and stove
On Solid	OFF	OFF	The module is connected to internet and is waiting for a communication from the DPRemote app	No operations, the module is working correctly
On Solid	Fast Blink	OFF	The module is connected to the DPRemote app and is communicating correctly	No operations, the module is working correctly
Slow Blink (once every 1 seconds)	OFF	OFF	The module is connected to the router but doesn't have an internet connection yet	If in few minutes the green LED doesn't stay on solid, try to reset the module and the router. Some settings could deny the module connection
Fast Blink (twice a second)	OFF	OFF	The module is waiting a router connection	If in few minutes the green LED doesn't stay on solid, try to reset the module and the router. If the problem persists, check the router settings
The Green and Red LED blink casually			The module isn't connected to the router	Reset the module and the router. If the problem persists, try to approach the module to the router and check if the settings of the module are correct
The Green and Red LED blink quickly (about 6 times per second)			After the pressure on the “ WS ” button the module is generating a WiFi network for its configuration	If you aren't in the configuration phase, reset the module by pressing the “ R ” button

10 MyDPRemote app configuration with QR Code.

To connect the smartphone to the M1 WiFi module just configured, follow this procedure if there is a QR code with the code.

From the MyDPRemote App and configuration page select “ADD DEVICE”. Subsequently, through the application, frame the QR code and the application fields will be filled in automatically. Otherwise, follow the Error paragraph: reference source not found to manually enter the data.

	 <p>Attention: The QR in the manual is just an example similar to what might be present in the packaging of the wifi module.</p>
---	--

	Verify that once you have read the QR code with the MyDPRemote App, the device code and reference server match the label on the back of the device.
---	---

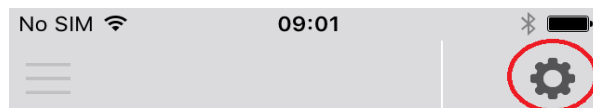
11 DPREmote and My DPREmote configuration without QR code

To connect the smartphone to the M1 WiFi module, follow this procedure:

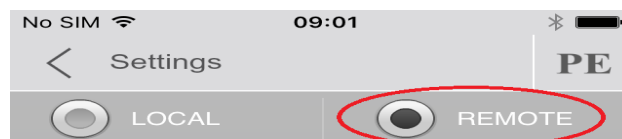
1. Control if you are connected to internet with mobile connection or WiFi;
2. Download the DPREmote app from Google Play or App Store, it depends on what device you have;
3. Start the DPREmote application by pressing its icon on your smartphone:



4. At the start, press on the icon on the top-right corner to enter in the settings:

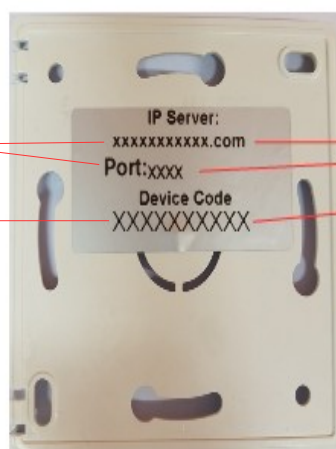


5. Select the remote connection mode:



6. In case you have label with full codes insert it in field of application.

App mydpremote

A screenshot of the "mydpremote" app's settings screen. It has a title "IMPOSTAZIONI DISPOSITIVO". There are two radio buttons: "LOCALE" and "REMOTO", with "REMOTO" selected. Below are fields for "INDIRIZZO", "PORTA" (with "3000" entered), "CODICE DISPOSITIVO", and "NOME". At the bottom are "ANNULLA" and "SALVA" buttons.

App dpremote

A screenshot of the "dpremote" app's settings screen. It has a title "Impostazioni". There are two radio buttons: "LOCALE" and "REMOTO", with "REMOTO" selected. Below are fields for "Indirizzo IP", "Porta", "Codice dispositivo", "Nome Stufa", and another "Codice dispositivo" field. At the bottom is a "SALVA" button.

7. In case you have label with only one code insert data as follow:

IP Address: duepiwebserver1.com Port: 3000

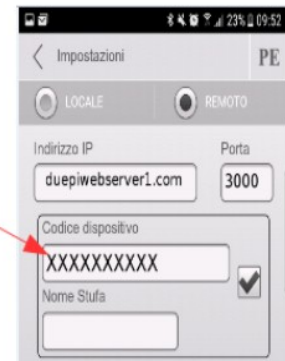
App mydpremove



Codice Dispositivo

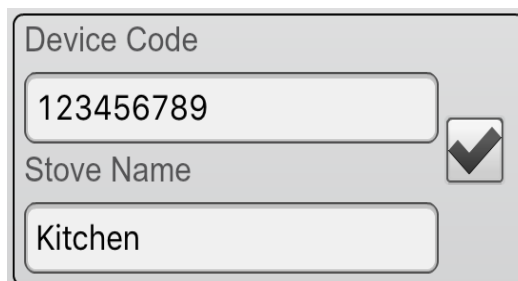


App dpremove



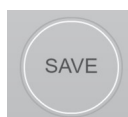
8. Use 1 of the 3 available fields for the “**Device Code**”, you can find it on the back of the module's box. Check the box near the “**Device Code**” and “**Stove Name**” fields.

ATTENTION! It's possible to insert up to 3 remote devices. The application will manage **ONLY** one device at a time, which is selected from the check-box near the fields.



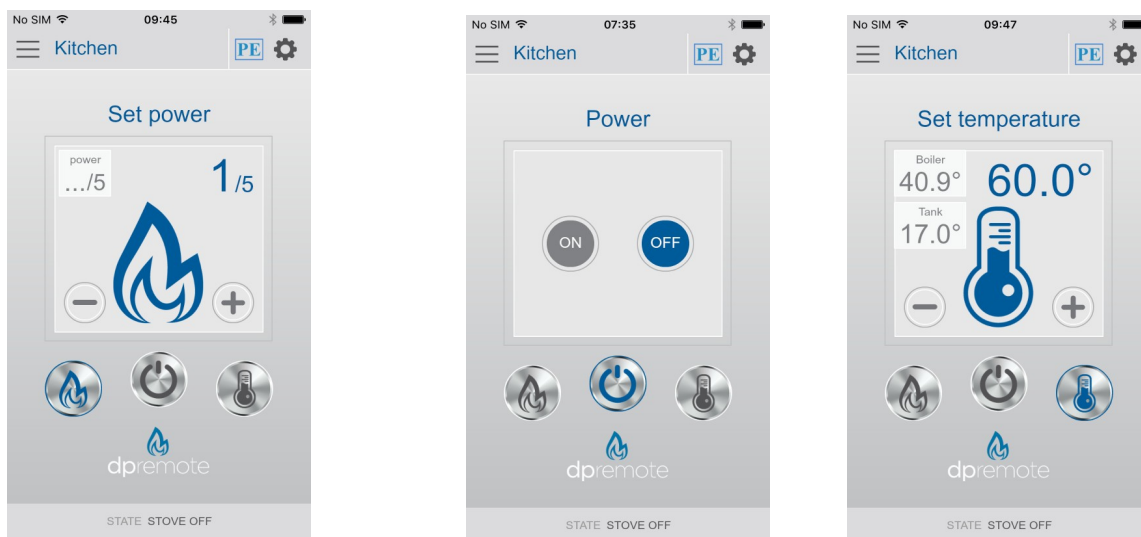
ATTENTION! The “**Stove Name**” field allows you to insert only **15** characters; it's an optional field of description.

9. Press the “**Save**” button to save the settings and return to the main page;

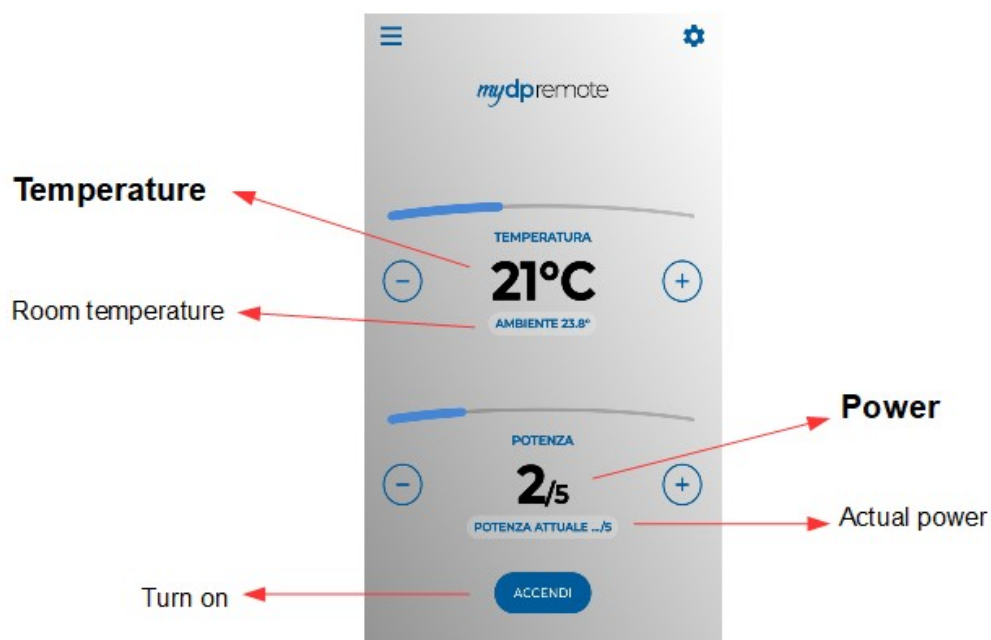


10. At this point, the application will try to connect to the WiFi module. If the fields are filled correctly, you can control your stove with the following panels:

App dpremove



App mydpremove

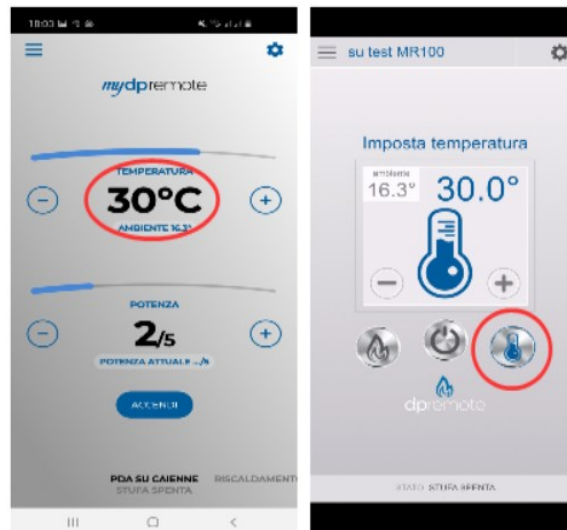


11. The application is now connected to the WiFi module. If this not happened, re-configure the application and control carefully the inserted data. Eventually see the **Par. 16** for troubleshooting.

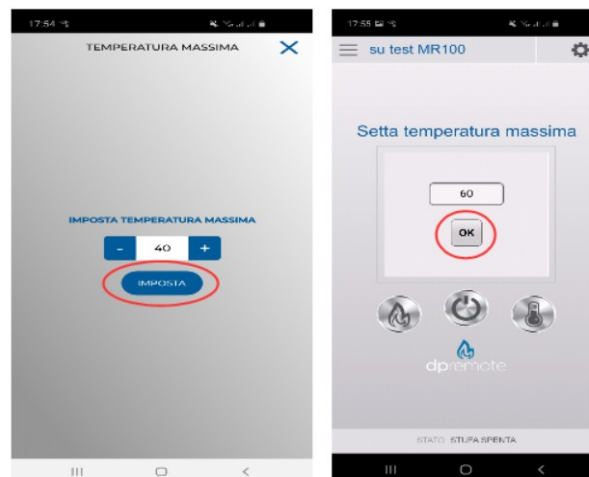
12 Change Set Temperature App.

By default the App is configured for a maximum settable temperature of 40 ° C. If used with boilers where a higher temperature is required, it can be increased as follows:

1. Press the area indicated in red for about 15 seconds.



2. Set the maximum set temperature and confirm with the button.



3. Now it will be possible to set the working temperature up to the new maximum limit that can be set.

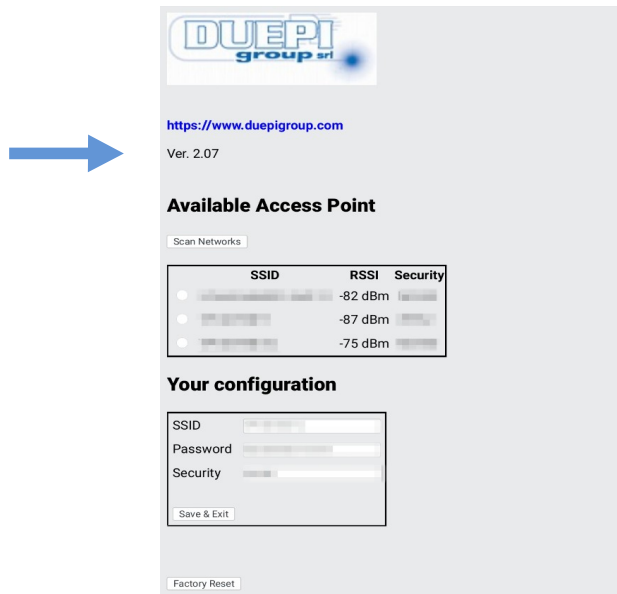
13 Connecting Alexa App

In the V2.00 firmware version, the wifi module support the Alexa App connection.

Click the following link to find more information about the product's evolution:

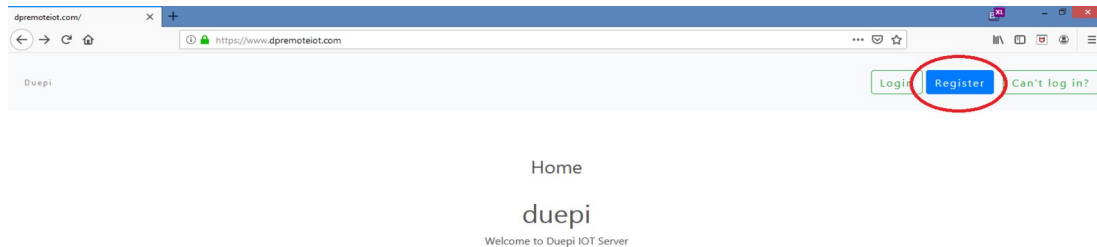
https://duepigroup.com/en/m1_informations_page/

You can also control your wifi module's firmware version in its configuration page:



IoT server registration

To connect to the Alexa app, first you have to register yourself in the server <https://www.dpremoteiot.com>. Click on “Register” to start.



First of all, it's necessary to fill the blank spaces with your name, your email and your password, as shown in the picture down below. Confirm the password and agree the terms and conditions.

Then click on “Signup” to continue.

Register

Your name	Type your name
Your email	Type your email
Your password	Insert your password
Confirm your password	Confirm the password

☐ I agree to the terms and conditions

Signup

After, click on “Create Device” to create a new device.

Dashboard

Add Smart Home Device

Click on Add button to create a smart home device

Create Device

Your Smart Home Device(s)

You do not have any Smart Home Device(s) created yet. Click on the create button to create a Smart Home Device.

To create a new device, insert in the blank spaces the name of the device, a brief description of the device itself and the unique code, a code written on the back of the wifi module.

Then click on “Enable email when device status change” and save.

Create Device

Friendly Name (Alexa invocation name) Insert the name of the device

Description brief description of the device

univocal ID Insert the univocal ID address

Thermostat

☒ Enable email when device status change

Save

Once saved, you will be able to see your device in the Dashboard, where you can add up to three devices.

When the process is done, restart the wifi module and after two minutes the status will change from offline to online.

At this point you will be able to send commands to the stove also using the Dashboard.

Dashboard

Add Smart Home Device

Click on Add button to create a smart home device

Create Device

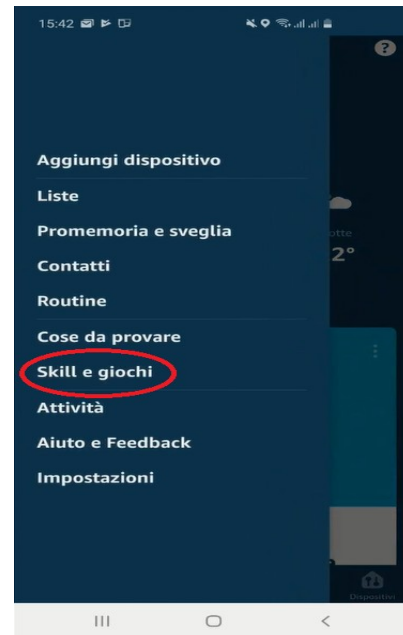
Your Smart Home Device(s)

Stufa DemoIOT Stufa Demo
<div>Status : Online Power Status : OFF</div> <div>Status: Stove Off, Room Temperature 28°C</div> <div>Working Power 1 to 5 <input type="text" value="1"/></div> <div>Set Temperature 5 to 90 <input type="text" value="5"/></div> <div>Off / On <input type="checkbox"/></div> <div><div>Edit</div><div>Delete Device</div></div>

Configure the Alexa App.

Open the Alexa application and select from the menu “skill and games”.

Type in the search bar the name of the skill,
in this case “Dpremove”.

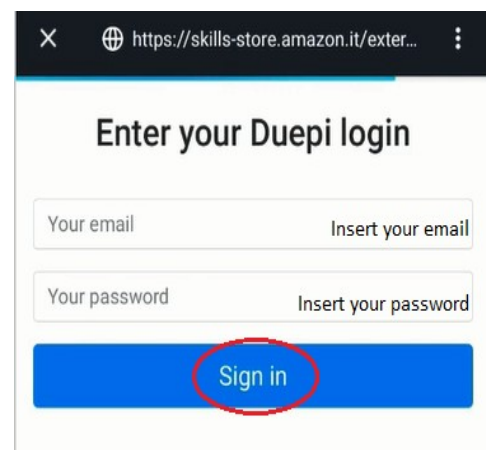


Select the Dpremove skill and then press “Enable use” to start.

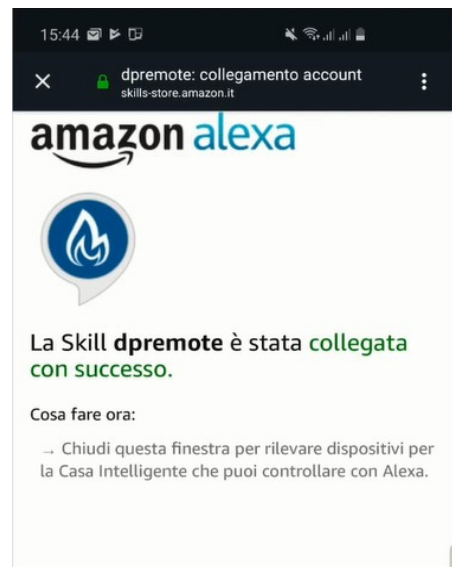


After that, insert your email and password
in the dedicated spaces.

Then press “sign in” to continue.



The skill now has been connected.
Close the screen to see the devices
to control.



To see the devices, enter in the skill's page and
click on “settings”. Then press on “discover devices”.
Alexa will search the devices and the entire
operation may last more than 20 seconds.



The operation will be finished when this screen will appear: Alexa has found a thermostat.

Now it's necessary to configure the devices.



To configure the devices, click on "All devices". Then select the device, set it ON/OFF and choose the temperature.



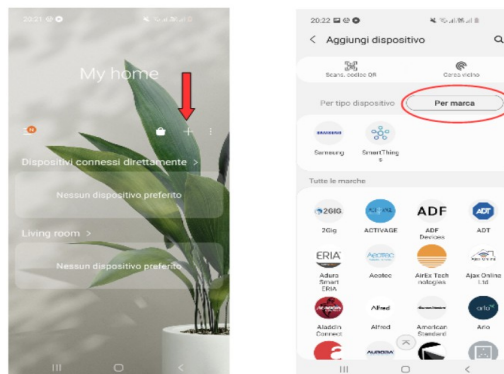
14 Samsung SmartThings App Connection

From firmware release V3.0 the module is comply with the Samsung SmartThings application.

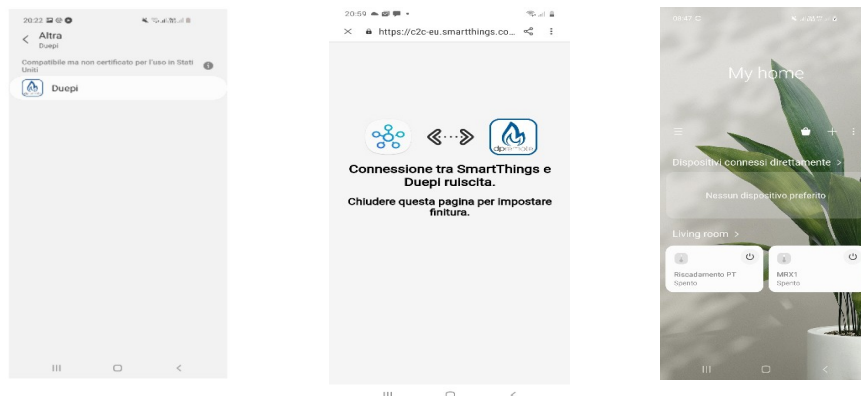
- Register on our IOT web page <https://www.dpremiot.com> as par,13
- Download SmartThings App be in Google Play for Android or in the IOS App Store according to the mobile device you have.



- Once installed, start the application
- Add new device by pressing the + button, selecting the device searching it By Brand DUEPI



- Once the Duepi device appears, select it and follow the instructions of the App to continue. At the end of the operation, the added DUEPI device will be available.



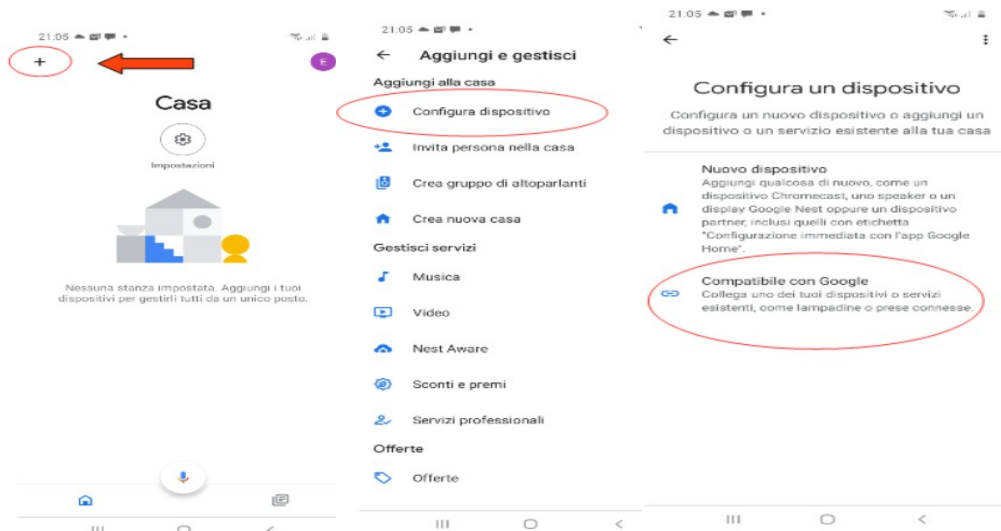
- Refer to the SmartThings App for the features available for the devices.

15 Google Home App Connection

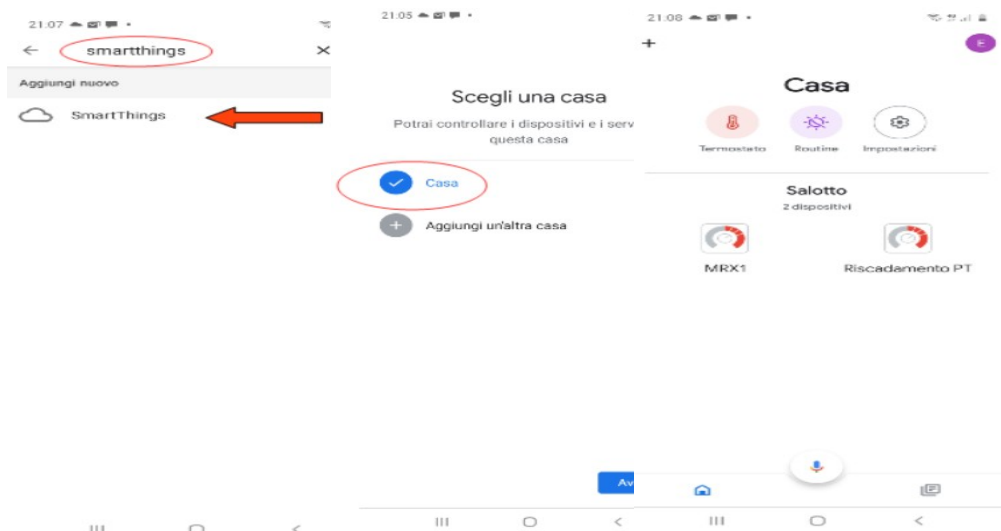
- Download the Google Home App present in Google Play for Android or in the IOS App Store according to the mobile device you have.



- Once the APP is open, add the device by selecting a model compatible with Google Home.



- Search for SmartThings by selecting it and adding it to your home



- At the end of the operation the wifi module will be connected to the Home App.
- Refer to user guide of the Google Home App, it will be possible to implement functions connected to other devices and voice commands.

16 Troubleshooting

Q: The module doesn't power up itself.

A: Control if the module is correctly connected to the stove.

Q: After pressing the “**WS**” button I can't find the WiFi module's network.

A: Try to shut down and power up the WiFi on your device.

Q: I can connect to the module, but while I'm writing my WiFi network informations, I was disconnected.

A: The module wait for 10 minutes, after that reset itself. Reset the module by pressing the “**R**” button for few seconds, and try again the operation.

Q: I can connect to the module, but when I try to open its internet page, it disconnect itself.

A: Reset the module by pressing the “**R**” button for few seconds, and try again the operation.

Q: I can connect to the module, but I can't open the internet page to configure it.

A: Try to delete the cache of the internet program you are using and recharge the page. The way of how to do that change from program to program, control the web site for the modality.

Generally you have to delete the “**temp**” data.

Q: The configuration page of the module is shown, but if I press the **Scan Network** or **Save & Exit** button an error appear.

A: Try to delete the cache of the internet program you are using and recharge the page. The way of how to do that change from program to program, control the web site for the modality.

Generally you have to delete the “**temp**” data.

Q: After pressing **Scan Network** button, my WiFi network isn't in the list.

A: Try to approach the module to the router. Otherwise you can configure manually your WiFi network inserting the network name (SSID), security and password in the correct fields.

Q: When I press the **Save & Exit** button, the page shows an error on the network name SSID.

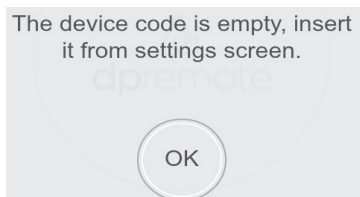
A: The module doesn't support network name and/or password with spaces. In this case you have to access to the configuration of your router and change the name/password of the network.

Q: I have configured the WiFi module, but it doesn't connect itself to the network, and the green and red LED are blinking.

A:

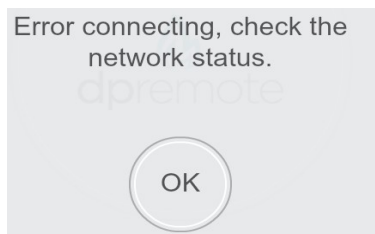
- Control if the network data used are correct.
- Try to approach the module to the router.
- Disconnect the module from the stove, wait some seconds and reconnect it.
- See the table at **Par 9**, which show the module functionality based on the LED status.

Q: After the configuration of DPRemote application, it shows me the following error:



A: Go to the settings (see **Par. 10**). Control the Device Code and the check-box selected.

Q: After the configuration of DPRemote application, it shows me the following error:



A: Control that the module has the green LED on solid and the red LED OFF.

Control if the smartphone that you are using is connected to internet.

Control if you have inserted the correct “**Device Code**”.

Q: I can't find an answer in these FAQ.

A: Try to disconnect the module from the stove, wait some seconds, reconnect it to the stove and repeat the configuration of the module and/or the application.

17 Connection Troubleshooting

If your device disconnects from the router too often or has difficulty connecting, check your router's configuration as follows and in accordance with your router's documentation.

Here's a checklist you can follow to resolve:

Step	What to Check
1. Make sure the 2.4GHz network is active	Log into your router's interface (usually via 192.168.1.1 or a single modem) and check that the 2.4GHz module is enabled and visible under WiFi. If there's a "Smart WiFi" option, try disabling it to have separate SSIDs for 2.4 and 5GHz.
2. Disable WiFi 6 if present	If your router is set to WiFi 6 mode or automatically "promoted" to WiFi 6, try disabling it. The WiFi module does not support WiFi 6, so there may be incompatibilities.
3. Check safety	Make sure the network uses WPA2-Personal, not WPA3, or mixed mode if necessary. If possible, try a simple (but secure) password for testing.
4. Set the 2.4GHz channel	Manually set the 2.4GHz channel to a fixed one (e.g. 1, 6, or 11) instead of leaving it on automatic, to avoid the router changing channels and the ESP losing the connection.
5. Check DHCP / Static Address Limits	Make sure the DHCP pool has free slots. If necessary, try assigning a static IP address to the Wi-Fi module (in the firmware interface or code) to rule out lease issues.
6. Update your router's firmware	Check for any updates available for your router. These often fix WiFi bugs.
7. Check power and positioning	Make sure the WiFi signal at the location of the WIFI module is favorable (not too far away, obstacles, thick walls, interference from other devices)

18 Technical features

WiFi frequency band 2.412 GHz to 2.484 GHz
Wi-Fi standard IEEE 802.11b/g/n (channels 1 to 14)
Supported communication protocols:
802.11b: 1, 2, 5.5, or 11 (Mbit/s)
802.11g: 6, 9, 12, 18, 24, 36, 48, or 54 (Mbit/s)
802.11n: HT20 MCS0 to MCS7
Antenna type PCB antenna typical gains 1.5 dBi
Usage temperature: 0°C - 45°C
Humidity: 10% - 85%
Power supply: DC 5V/220mA
Max Power: 16dBm Max

Supported Operating Systems: iOS 8.0 or higher, Android 4.0 or higher.

19 Declaration of Conformity

M1 device is comply with European Standards:



EMC 2014/30/UE [CEI EN 61000-6-1:2007-01 CEI EN 61000-6-3:2007-01]
LVD 2014/35/UE [CEI EN 60335-1:2013-05] (Checked but not applied)
RAEE 2012/19/UE
ROHS 2011/65/UE
Wi-Fi:
CE TCF-672CC17 ETSI EN300 328 V2.1.1
EMC Draft ETSI EN 301 489-1 V2.2.0
Draft ETSI EN 301 489-17 V3.2.0
(Radio Equipment Directive) RED 2014/53/UE
(Radio Equipment Directive) RED BS EN 18031-1:2024
FCC 2AC7Z-ESPWROOM02 Rule Part: 15C
Wi-Fi WFA63622 Wi-Fi CERTIFIED™ b, g
WPA™ – Enterprise, Personal
WPA2™ – Enterprise, Personal
Wi-Fi Protected Setup™

20 Information on product disposal

The symbol means that this product at the end of its life must be disposed of separately from normal household waste. Please note that it is your responsibility to dispose of electronic equipment at recycling centers to help conserve natural resources.

